

WELCOME TO THE NEW CLASSIC

THE MOST EXCITING PLACE
TO SHOP LOCAL

NATURAL. MODERN. CLASSIC.

1908 EASTWOOD ROAD, WILMINGTON, NC 28403 | 910-256-6050
4151 MAIN AT NORTH HILLS STREET, SUITE 120, RALEIGH, NC 27609 | 984-200-9113
WWW.PAYSAGE.COM

TABLE OF CONTENTS

PAYSAGE

03 Store News: A Note from Paysage

04 A New Hue: Red Pear + Martini Olive

05 On the Hunt: Luxe for Less

06 Gigi's Kitchen: Bûche de Noël

07 Book of the Month: Jacques Garcia, 20 Years of Passion

08 Vendor Spotlight: Scott Summerfield

09 Sneak Peek: The Winter Collection

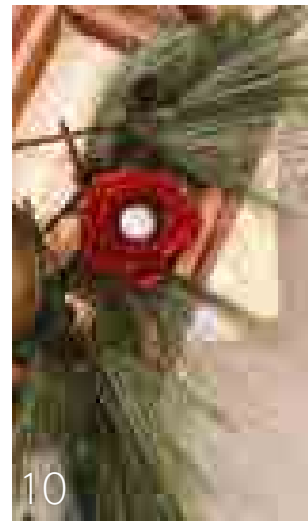
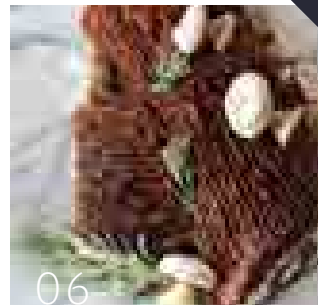
10 Events & Happenings: Paysage is Popping Again

11 Scent of the Month: Vetiver Fatal

12 Design & Decor: The Golden Rule

Copy by Emily Norris
Pages 03: 04, 08, 11, 12

Copy by Vanessa R. Hansen
Pages 05, 06, 07, 09



PAYSAGE HOME

www.paysage.com

1908 Eastwood Road, Wilmington, NC 28403
910.256.6050

4151 Main at North Hills Street, Suite 120, Raleigh, NC 27609
984.200.9113



STORE NEWS

A NOTE FROM PAYSAGE

December always brings lively holiday cheer at Paysage. With natural, modern and classic Christmas decor abounding in store and lavish assorted gifts for loved ones, Paysage Home is a one-stop shop for any holiday wishes this season.

This December, Paysage bloomed again. We hosted our annual event: Amaryllis at Paysage! Turn to page 10 for details.

Stay tuned for design tips and yummy holiday recipes, and as always, follow us on Instagram and Facebook @paysagehome and @paysageatnorthhills for weekly updates on events and store news.

Enjoy!

A NEW HUE: Red Pear + Martini Olive

Two of the most iconic holiday colors with a whimsical twist: Red Pear, a dusky red, and Martini Olive, a bosky olive green are our Pantone hues of the month this December.

SELECTED FROM PANTONE'S
COLORS OF FALL 2018



Long Needle Pine
Cone Spray: \$20

Deep greens have been used for centuries in Christmas decorating; reminiscent of holly leaves, mistletoe, and fraser fir trees. The perfect compliment alongside a heavy green is a luminous red, which represents holly berries and poinsettias.

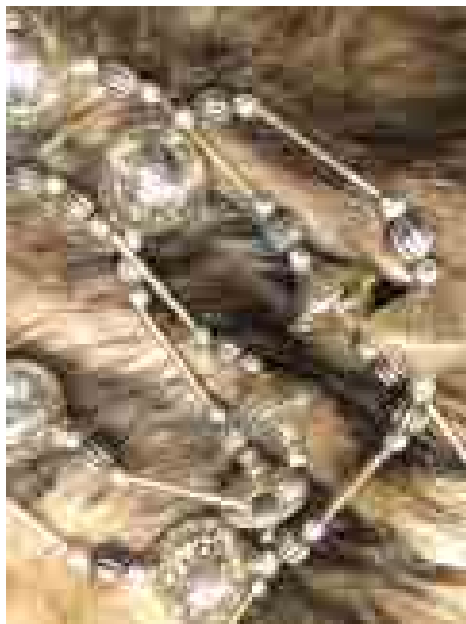
ON THE HUNT: *Luxe for Less*

Living up your home for the holidays doesn't have to be expensive. Be surrounded in style with these affordable decor pieces.



2. Cast Iron Stag Stocking Holder,
\$25.00

3. Garland,
\$22.00



1. Glass Christmas Trees,
\$22.00 & \$18.00

4. Botanical Greens,
\$32.00





Gigi's Kitchen

Photo courtesy of: <https://www.bakefromscratch.com/classic-buche-de-noel/>

BÛCHE DE NOËL

A traditional French Christmas cake made to resemble a Yule Log, Bûche de Noël is a delightful holiday dessert.

PREP TIME: 45 MINUTES

COOK TIME: 15 MINUTES

TOTAL TIME: 1 HOUR 30 MINUTES

INGREDIENTS

2 cups heavy cream
1/2 cup unsweetened cocoa powder
1/2 cup confectioners' sugar
1/2 cup white sugar
1/4 cup all-purpose flour
2 tablespoons vegetable oil
1 teaspoon vanilla extract
1/8 teaspoon salt
6 egg whites
6 egg yolks
4 ounces bittersweet chocolate
Nonstick vegetable oil spray

INSTRUCTIONS

Preheat oven to 375 degrees F. Line a rimmed baking sheet with parchment paper and spray with nonstick vegetable oil.

In a large bowl, stir cream, 1/2 cup cocoa, 1/2 cup confectioners' sugar, and 1 teaspoon vanilla extract until thick. Heat chocolate, vegetable oil, and vanilla in a microwave-safe bowl in 10-second intervals. Warm until melted.

In a separate bowl, beat egg yolks with 1/2 cup sugar until thick. Blend in 1/3 cup unsweetened cocoa powder, 1 1/2 teaspoons vanilla extract, and salt.

Place a large kitchen towel on a flat counter. Whisk cocoa powder and confectioners' sugar in a small bowl and dust the towel with the mixture.

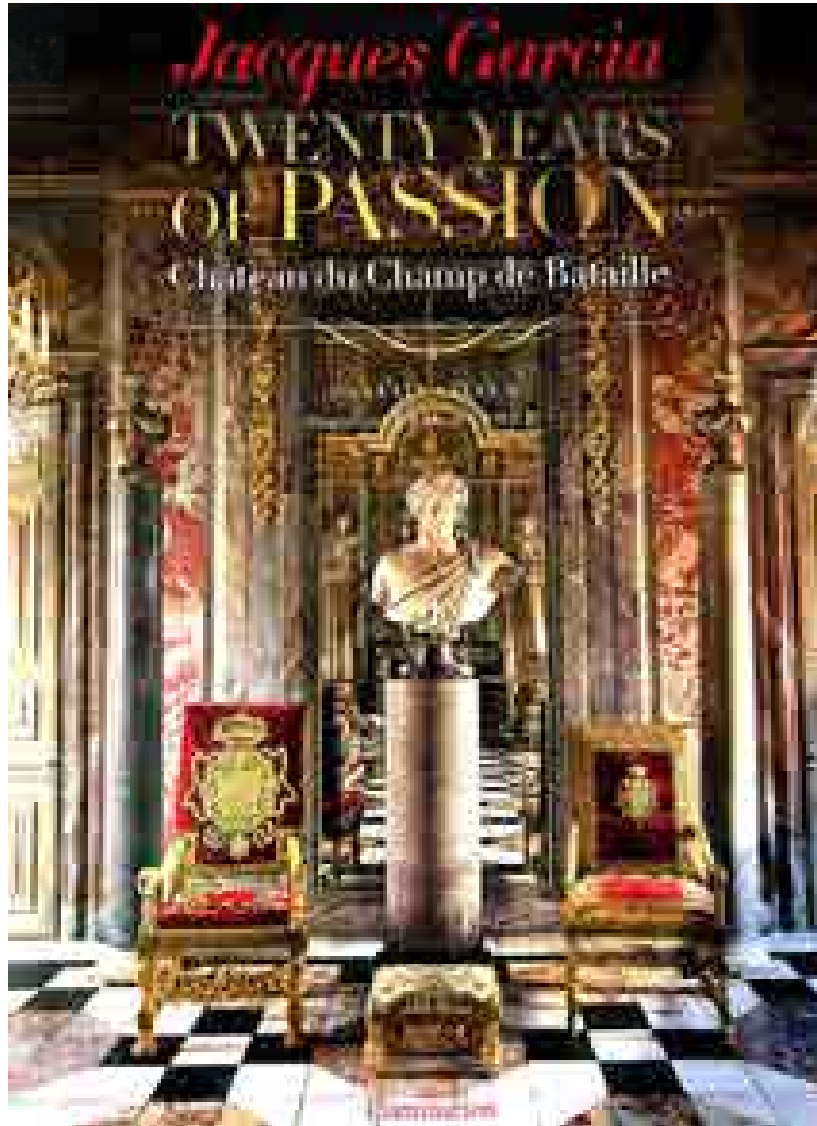
In a glass bowl, whip egg whites, gradually adding 1/4 cup white sugar. Pour the yolk mixture into the whites. Spread the batter evenly into the prepared baking sheet.

Bake for 12 to 15 minutes. Once the cake is fully baked, remove and run a knife along the edge of the baking sheet. Turn cake over onto the prepared towel. Roll cake into a log shape inside the towel. Dust with confectioners' sugar.

BOOK OF

This visually sensational book takes readers into the private domain of Jacques Garcia, providing unprecedented access into the magnificent interiors of the chateau that the great decorator calls home.

Antiquities aficionado and much-lauded interior designer Jacques Garcia purchased the Chateau du Champ de Bataille twenty years ago in a state of virtual ruin and lovingly restored it to its former splendor.



The chateau is now a treasure trove of 17th & 18th century architecture, furniture, and design to which Garcia brought his considerable expertise gleaned from numerous restoration projects, including rooms at Versailles and the Louvre. Every detail—from the library, to the grand dining room, to the hall of taxidermy—has been carefully reconstituted and interpreted through the prism of Jacques Garcia's extraordinary eye and inimitable style.

THE MONTH

VENDOR SPOTLIGHT

SCOTT SUMMERFIELD



Scott Summerfield's hand-blown glass accessories are the latest, and loveliest, new addition to the Paysage store. Summerfield creates pieces that, in his words, "beautify one's space," and we could not agree more.

Uniquely incorporating elegance and charm into his pieces, Summerfield says "a delicate balance of beauty and tension" are what makes his work "unique and curious".

We have always had an affinity for local artists, and with our recent expansion to Raleigh, North Carolina, Paysage is expanding our collection local artists across the state as well.

Summerfield resides in Bakersville, North Carolina, where he creates, by hand, these one-of-a-kind pieces we are thrilled to welcome into our stores.

Paysage is an exclusive

retailer of Scott's work in Wilmington, North Carolina. Stop in today to pick up one of Scott Summerfield's brilliant glass pieces.



All photos courtesy of <https://www.scottsummerfieldglass.com/shop/>



THE WINTER COLLECTION

CHRISTMAS AT PAYSAGE

It's the most wonderful time of the year! Holiday decor is out and about in our stores and we are so happy to bring some holiday cheer.

We have gorgeous white and silver decor if you are looking for a simplistic and clean look to create your own Winter Wonderland.

Include a pop of red with Santa Claus's and hang them from the ceiling or wall to create a statement.

Glorious Gold, a classic color that we all love. This adds warmth to your room and a little razzle-dazzle for the holidays. Whether you add in a few touches here and there to the mantle, Christmas Tree ornaments or the wreath on the front door, you truly can't go wrong with gold.

Add in some natural elements like green pine needles and pine cones to bring it all together at the dining or coffee table.



PAYSAGE IS BLOOMING

JOIN US FOR OUR ANNUAL HOLIDAY EVENT



Paysage bloomed beautifully this December! Our annual holiday event was a huge success.

However, we still have pieces from our Amaryllis Bulb Collection! Stop by the Wilmington store soon to pick up a beautiful Amaryllis for yourself!

Due to this weekend's snowy weather, we will be holding another Amaryllis event at our North Hills store on Friday, December 14th from 4pm to 7:30pm.

Follow us on Facebook and Instagram for updates on events and happenings
[@paysageatnorthhills](#) [@paysagehome](#)

We can't wait to see you!

SCENT OF THE MONTH

VÉTIVER FATAL

Created by Atelier Cologne, Vetiver Fatal is a strong, sultry scent.

This cologne even doubles as a room spray, giving you the option to fill your home with a warm, decadent scent this season.

Vétiver Fatal is a scent that will turn heads. Pick yours up today for the perfect holiday cologne



Photo courtesy of bloomingdales.com

\$125.00

DESIGN & DECOR

THE GOLDEN RULE



If there's one rule Gigi holds true in her designs, it is to always make a statement. Designers worldwide agree that statement pieces are what bring a room together—just be sure to not over-do it.

Incorporating a statement into your designs for the holidays can pull unique, unforgettable design elements into traditional holiday decor.

Make this holiday season one to remember with one of our signature statement pieces, such as our holiday fillers (\$9-\$24) or our Bobbin of String Pillar candles (\$27).

Be sure to follow us on Instagram and Facebook to receive holiday design and decor tips, tricks and updates throughout the month of December!