

WELCOME TO THE NEW CLASSIC



THE MOST EXCITING PLACE
TO SHOP LOCAL

NATURAL. MODERN. CLASSIC.

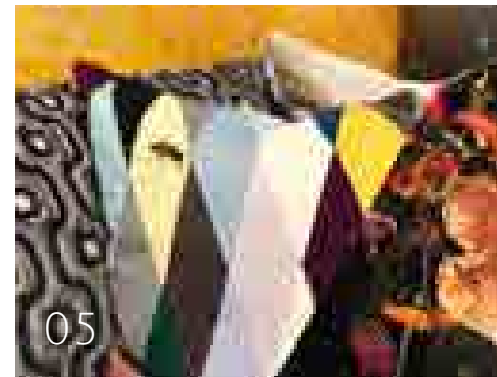
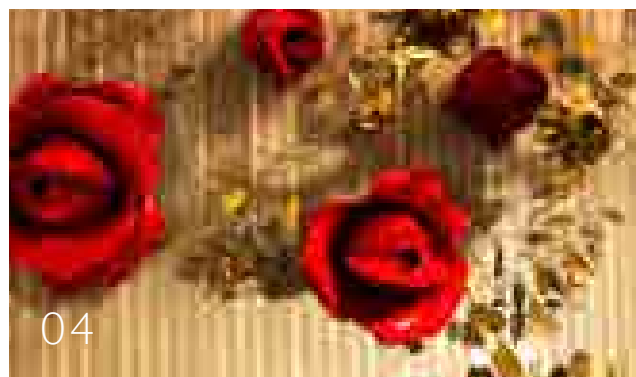
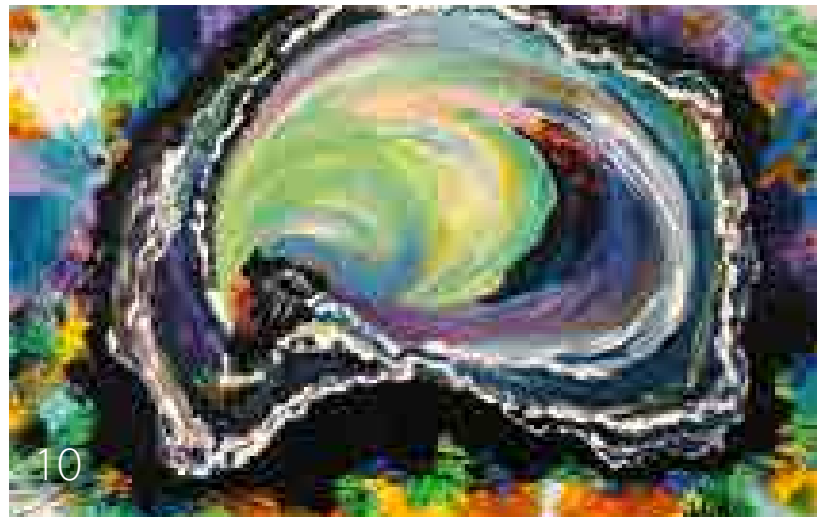
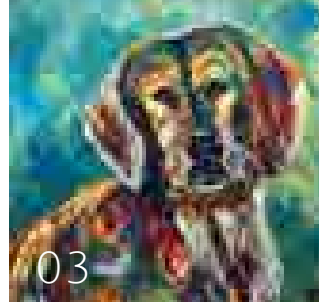
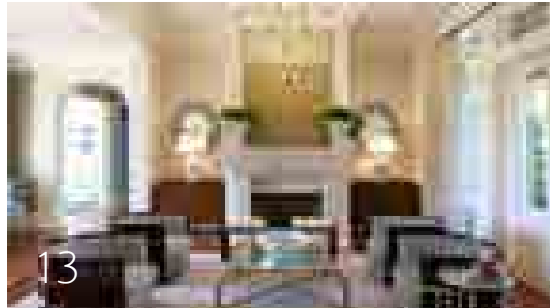
1908 EASTWOOD ROAD, WILMINGTON, NC 28403 | 910-256-6050
4151 SUITE 120 MAIN AT NORTH HILLS, RALEIGH, NC 27609 | 984-200-9113
WWW.PAYSAGE.COM

TABLE OF CONTENTS

PAYSAGE

- 03** Store News: A Note from Paysage
- 04** Design & Decor: Flowers Don't Only Belong in Vases
- 05** A New Hue: Nebluas Blue & Ceylon Yellow
- 06** On the Hunt: Luxe for Less
- 07** Gigi's Kitchen: Crepes et Nutella
- 08** Book of the Month: Dog Loves Drawing
- 09** Vendor Spotlight: Siben Designs
- 10** Sneak Peek: Pantone's Colors of Spring 2019
- 11** Did you know?: The History Behind Valentines Day
- 12** Events & Happnings: LEE Loves Local
- 13** Holiday Special: Our Gift to You

Design and copy by Emily Norris:
Pages 03, 04, 05, 06, 08, 09, 10, 12



PAYSAGE HOME

1908 Eastwood Road, Wilmington, NC 28403
9102566050

www.paysage.com



STORE NEWS

A NOTE FROM PAYSAGE

February may be the second and shortest month of the year, but this month is full of exciting firsts and several events & celebrations at Paysage.

Our annual event, Lee Loves Local, will be held on Sunday, February 10th in Wilmington, and on Friday, February 16th in North Hills. Lee Loves Local is an event that supports local vendors, featuring one-of-a-kind art, delicious hors d'oeuvres and cocktails, and good company. Find more details on Lee Loves Local on page 9.

Stay tuned for Valentines Day-inspired recipes, details on February's design trends, and a look into Spring 2019's most coveted colors.

Enjoy!



flowers don't *only* belong in vases

GIVE YOUR HOME SOME LOVE THIS
FEBRUARY

Featured: Rosebud Wall Brooch, \$99-\$499.00;
Eucalyptus-Antique Brass \$75.00

Long after your dozen roses have dried and your boxes of chocolates are empty, these eye-catching Rosebud Wall Brooches will fill your home with everlasting love.

The Rosebud Wall Brooch, in an amazing bright red, are gorgeous one-of-a-kind pieces perfect for any room in your home. Make a statement with one unique rosebud, or fill your walls with flowers, creating a lavish rose arrangement.

Pair the Rosebud Brooch with our lovely Eucalyptus Antique Brass wall ornaments for a lush wall bouquet.

Your home deserves some love this February, too. Curate brilliant blossoms in the heart of your home that will stand the test of time.

This Valentines day, gather flowers that will last forever. Stop into the store to pick up a Rosebud Wall Brooch before they're gone!



A NEW HUE: Nebulas Blue & Ceylon Yellow

SELECTED FROM PANTONE'S
COLORS OF WINTER 2018

This February, we've curated a unique combination of sprightly colors for our hues of the month: **Nebulas Blue** and **Ceylon Yellow**.

Nebulas Blue, representing confidence and stability, has therapeutic effects on the mind and body. **Ceylon Yellow**, the brightest color of the visible spectrum, generates happiness and optimism.

When paired together, **Nebulas Blue** and **Ceylon Yellow** are the perfect complements fusing vitality and tranquility.

Interested in Paysage products that use **Nebulas Blue** and **Ceylon Yellow**? See one of our designers for tips on how to best incorporate these colors into your home.



Featured: The
Tide Cocktail
Table
\$2,997.00

PANTONE'S COLORS OF WINTER 2018

Red Pear
Valiant Poppy
Nebulas Blue
Ceylon Yellow

Martini Olive
Russet Orange
Ultra Violet
Crocus Petal

ON THE HUNT:

*Lux*e for *Les*s

Living up your home doesn't have to be expensive. Be surrounded in style with these affordable decor pieces.

1. Succulent in Bisque White \$22-\$48.00



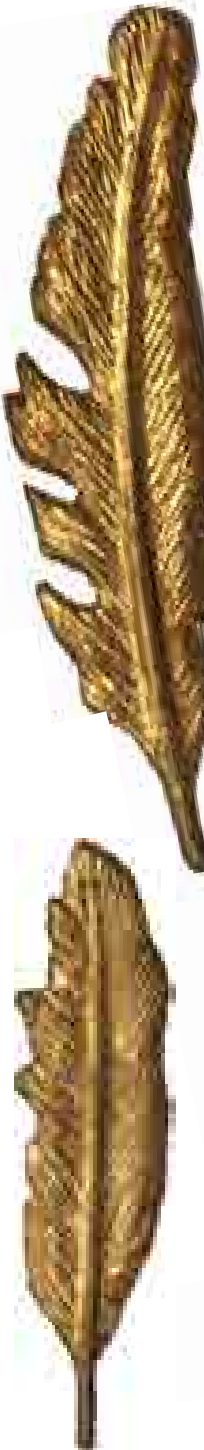
2. Gilded Lion Head Coat Hook \$65.00



3. Multicolor Party Picks \$45.00



4. Feather Gold Leaf \$49-\$65.00





Gigi's Kitchen

INGREDIENTS

2 eggs
 1 cup milk
 1/4 cup water
 2 tbsp vanilla
 1 cup all-purpose flour
 2 tbsp sugar
 2 tbsp melted butter
 Nutella

Photo courtesy of:
<https://www.recipetineats.com/nutella-crepes-with-strawberries/>

CRÊPES ET NUTELLA

This decadent French dish is both simple and delicious.

ON FEBRUARY 2, FRANCE OBSERVES LA CHANDELEUR, A DAY DEDICATED TO EATING CREPES. CELEBRATE ACCORDINGLY WITH THIS SWEET, CLASSIC FRENCH DISH.

Ingredients and directions provided by The Yellow Table:
<https://www.theyellowtable.com/recipes/best-nutella-crepe-recipe>

INSTRUCTIONS

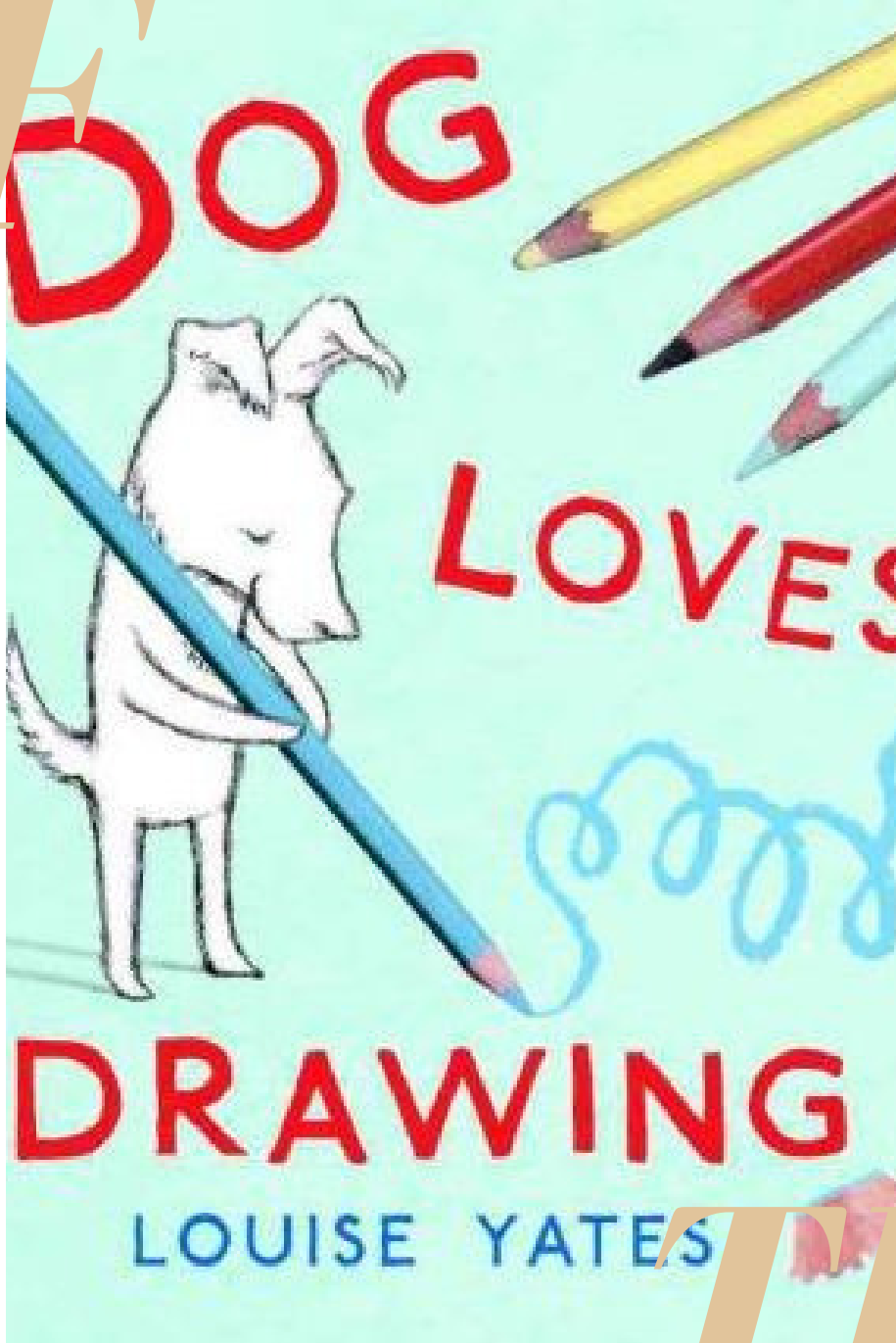
Place all ingredients in a blender and blend until smooth. Strain the batter into another bowl. Cover with plastic wrap and place in the refrigerator for at least an hour to allow all the air bubbles to settle. Heat a small crêpe pan (or nonstick skillet) over medium high heat. Swirl 1 teaspoon of butter in the pan and add a small amount of batter to the pan—swirl the pan so that the batter evenly and thinly coats the bottom. Cook for about 30 seconds and flip. Cook for another 10-15 seconds and remove to a plate. Continue cooking the rest of the batter, adding additional butter every third crêpe or so. Place the crêpes on a sheet tray, cover with aluminum foil, and keep warm in a 225 degree F oven until ready to serve. To serve: Spread each crêpe with Nutella, and then fold in half, then into fourths, like a napkin. Dust with powdered sugar and serve warm.

BOOK

OF

Dog loves books, but one day he receives a strange one in the mail—it's blank! Soon, Dog realizes that this book is not for reading, but for drawing. Before long, Dog is doodling and drawing himself into a new world, full of friends and surprises.

Dog Loves Drawing by Louise Yates is a delightful children's picture book that sparks imagination and creativity in all those who open



it's pages. The School Library Journal notes that Dog Loves Drawing "will inspire and entertain young artists and fun-loving readers alike". The whimsical illustrations illuminate Dog's inventive personality and create a lively story for children to follow curiously. Pick up Dog Loves Drawing in store today to take your little one on a literary adventure.

Dog Loves Drawing
by Louise Yates
\$25.00

Italicized description provided by Penguin Random House: <https://www.penguinrandomhouse.com/books/215674/dog-loves-drawing-by-louise-yates/9780375870675/>

THE MONTH

VENDOR SPOTLIGHT

SIBEN DESIGNS

Siben Designs aims to bring new and exciting designs to retailers in North America. With a constantly expanding and changing market, the founder, Sion Benchimol, notes that international retailers are under-represented in North America.

Siben Designs remedies this by, in their words, "connecting North American retailers with international brands".

Benchimol is an experienced business developer with 20 years in international business. Located in Los Angeles, California, New York, and Paris, France, Siben Designs strives to bring international design to the forefront in North America.



LEE LOVES LOCAL

FOR THE LOVE OF ART



Since 1969, LEE has been committed to manufacturing earth friendly products, using sustainable processes by people who care about the environment.

— **Lee Industries**

We are beyond excited to host our fourth annual For the Love of Art!

In partnership with Lee Industries, For the Love of Art is a lively event we hold every February featuring some of our favorite local artists and vendors, hors d'oeuvres and cocktails, and special events for our clients.

PAINTING (ABOVE) BY HELEN DIXON

Lee Loves Local will be held at Paysage in Lumina Station on Sunday, February 10th from 2pm-6pm and at Paysage in North Hills on Saturday, February 16th from 2pm-6pm.

This year, we will be welcoming local artists Helen Dixon and Katia Campbell to paint live portraits of your pets for you to take home.

Don't hesitate to call us with any questions. We can't wait to see you!

SNEAK PEEK

PANTONE'S COLORS OF SPRING & SUMMER 2019



COLORS OF SPRING AND
SUMMER 2019:

Fiesta

Jester Red

Turmeric

Living Coral

Pink Peacock

Pepper Stem

Aspen Gold

Princess Blue

Toffee

Mango Mojito

Terrarium Moss

Sweet Lilac

FEATURED ABOVE: PAINTING BY LOCAL ARTIST HELEN DIXON

The wait is finally over---Pantone has released the colors for their Spring and Summer 2019 palette. Every season, Pantone evaluates the colors used most frequently during New York Fashion Week and curates a color report to release seasonally.

From that report, consumers can stay on-trend with their color choices for the season. Get ahead of the trend this spring by stopping into Paysage and picking up pieces in line with the Pantone color report to revivify your home for the upcoming season.





Heart Pendants by
SIBEN DESIGNS

DID YOU KNOW?

THE HISTORY BEHIND VALENTINES DAY

In the 1300s, Valentine's Day officially became a holiday associated with love and romance. Many believed that birds started their mating season on February 14, which is why doves are often associated with love.

Saint Valentine wasn't just one person. In fact, he might have been two or three. But the most common "founder" of Valentine's Day was the Saint Valentine who defied Emperor Claudius II. At the time, Claudius had banned marriage because he thought it distracted young soldiers.

Valentine felt a bit differently — he illegally married couples until he was caught. After he was sentenced to his death, young couples would visit his cell and give him flowers and cards. And the day he actually died? February 14. Allegedly.

The first valentines were sent in the 15th century, but not until the 17th century did people start exchanging cards and letters.

The most popular gift on Valentine's Day is flowers, followed by chocolate and then jewelry. Americans send more than 220 million roses each year, and as many as six million couples will get engaged on February 14. February is the second most popular month after December for proposals!

The first heart-shaped box of chocolates was introduced in 1868. Today, more than 36 million heart-shaped boxes of chocolates are sold each year. That's 58 million pounds of chocolate. Want to give the gift of love that won't melt and lasts forever? Stop by Paysage to pick up one of our classic Heart Pendants. Valentine's Day facts courtesy of Good Housekeeping: <https://www.goodhousekeeping.com/holidays/valentines-day-ideas/a26863/valentines-day-facts/>



OUR GIFT TO YOU

Gigi's love for interior design started when she was just a little girl, and in the spirit of Valentines Day, she wants to share that love with you! This February, Gigi is offering a Home Design consultation to one of our lovely clients.

Fill out the form attached and you may be the winner! Then, pick a room and Gigi Sireyjol-Horsley will visit you and discuss with you your style and your needs for your interior.

The Home Design consultation is one hour spent at your house with one of our interior

designers to talk about your lifestyle and your needs for your home. The Paysage team will then put together a proposition for furniture and accessories that will reflect your conversation and perfectly fit your style and your needs.

There is no obligation to purchase any item after the consultation, but we hope that you will love the result so much you will want to pursue Gigi's proposition. Our no-obligation recommendations get you started on fulfilling your deepest design desires.



_____,you were gifted a

Home Design Consultation

Offered by : _____