

WELCOME TO THE NEW CLASSIC



THE MOST EXCITING PLACE
TO SHOP LOCAL

NATURAL. MODERN. CLASSIC.

1908 EASTWOOD ROAD, WILMINGTON, NC 28403 | 910-256-6050
4151 SUITE 120 MAIN AT NORTH HILLS, RALEIGH, NC 27609 | 984-200-9113
WWW.PAYSAGE.COM

TABLE OF CONTENTS

PAYSAGE

- 03** Store News: A Note from Paysage
- 04** Design & Decor: Garden Party Ready with Gigi
- 05** A New Hue: Princess Blue & Pepper Stem
- 06** On the Hunt: Luxe for Less
- 07** Gigi's Kitchen: Canard à L'orange
- 08** Book of the Month: Wabi Inspirations
- 09** Vendor Spotlight: Carvers Guild
- 10** Events & Happenings: Azalea Festival
- 11** Sneak Peek: Pantone's Colors of Spring 2019
- 12** Gigi's Choice: Paris Combo
- 13** Seasonal Exclusive: Pre-Market Sale

Design and copy by Emily Norris:
Pages 03, 04, 05, 06, 07, 09, 11, 13

Design and copy by Vanessa R Hansen: Pages 08, 10 & 12



PAYSAGE HOME

www.paysage.com

1908 Eastwood Road, Wilmington, NC 28403
910.256.6050

4151 Main at North Hills Street, Suite 120, Raleigh, NC 27609
984.200.9113



STORE NEWS

A NOTE FROM PAYSAGE

With spring on the horizon, Paysage is ready and stocked with sprightly furnishings and accessories! Get ready for garden parties and the Azalea Festival with our beautiful floral-inspired decor.

Along with new spring inventory, Gigi is excited to announce a pre-market sale! Find more details on page 13.

Stay tuned for Spring-inspired recipes, details on March's design trends, and a look into Spring 2019's most coveted accessories.

Enjoy!



garden party prep with gigi

GET GARDEN PARTY READY WITH ACCESSORIES FROM PAYSAGE

Garden party season is upon us, and Paysage has you covered with all of your springtime entertaining needs.

Whether you're throwing a dinner celebration, a small get-together, or an extravagant garden party, Gigi has just the right accessories to bring your affair to another level.

Featured: Silk Orchid Crystal Napkin Rings, \$50

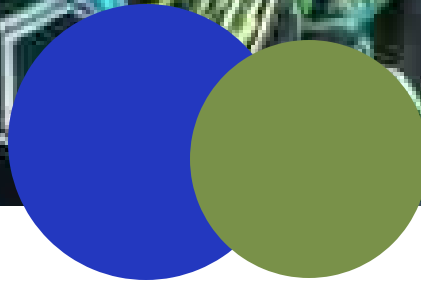
"Flowers are projected to escape vases and end up as a part of your home decor" says Paysage owner, Gigi Horsley.

Make your springtime celebrations memorable this season. Stop into the store to pick up a set of Silk Orchid Crystal napkin rings before they're gone!



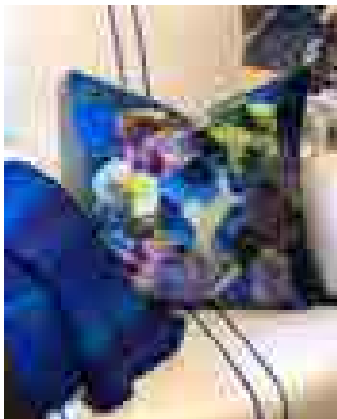
A NEW HUE: Princess Blue & Pepper Stem

SELECTED FROM PANTONE'S
COLORS OF SPRING 2019



This March, we've curated a cheerful combination of complimentary colors for our hues of the month: **Princess Blue** and **Pepper Stem**. **Princess Blue**, a variation of cobalt blue, is a striking and powerful color. **Pepper Stem**, a light forest green, generates feelings of freshness and safety.

When paired together, **Princess Blue** and **Pepper Stem** are splendid complements that fuse verve and serenity. Interested in Paysage products that use **Princess Blue** and **Pepper Stem**? See one of our designers for tips on how to best incorporate these colors into your home.



*Featured: Kashmiri Cobalt
Decorative Pillow
\$250.00*

PANTONE'S COLORS OF SPRING 2019

Fiesta	Pink Peacock	Toffee
Jester Red	Pepper Stem	Mango Mojito
Turmeric	Aspen Gold	Terrarium Moss
Living Coral	Princess Blue	Sweet Lilac

ON THE HUNT:

*L*uxure for Less

Living up your home doesn't have to be expensive. Be surrounded in style with these affordable decor pieces.

1. White Hibiscus Crystal Napkin Ring, \$37.00



2. Eleanor budvase, \$25-26.00



Gigi's Kitchen

INGREDIENTS

Whipped Cream:

1/2 ounce Baileys Original Irish Cream

4 ounces whipping cream

2 tablespoons confectioners' sugar

French Toast:

2 1/2 ounces Baileys Original Irish Cream

2 1/2 ounces whipping cream

1/2 teaspoon vanilla extract

2 eggs

2 thick slices bakery-style bread

1 tablespoon butter

3 1/2 tablespoons dark chocolate chips,
melted

Photo courtesy of All Recipes

BAILEYS À LA FRENCH TOAST

An Irish twist on a classic French dish

PAIN PERDU, AS THEY CALL FRENCH TOAST IN FRANCE, IS GIVEN A DELICIOUS SPIN WITH BAILEYS CREAM

Ingredients and directions provided by All Recipes:
www.allrecipes.com/recipe/261430/baileys-a-la-french-toast/

INSTRUCTIONS

Whisk together the 1/2 oz. Baileys Original Irish Cream, 4 oz. of whipping cream and 2 tbsp confectioners sugar until mixture forms soft peaks. Chill and put aside for topping the finished product. Combine 2 1/2 oz. of Baileys

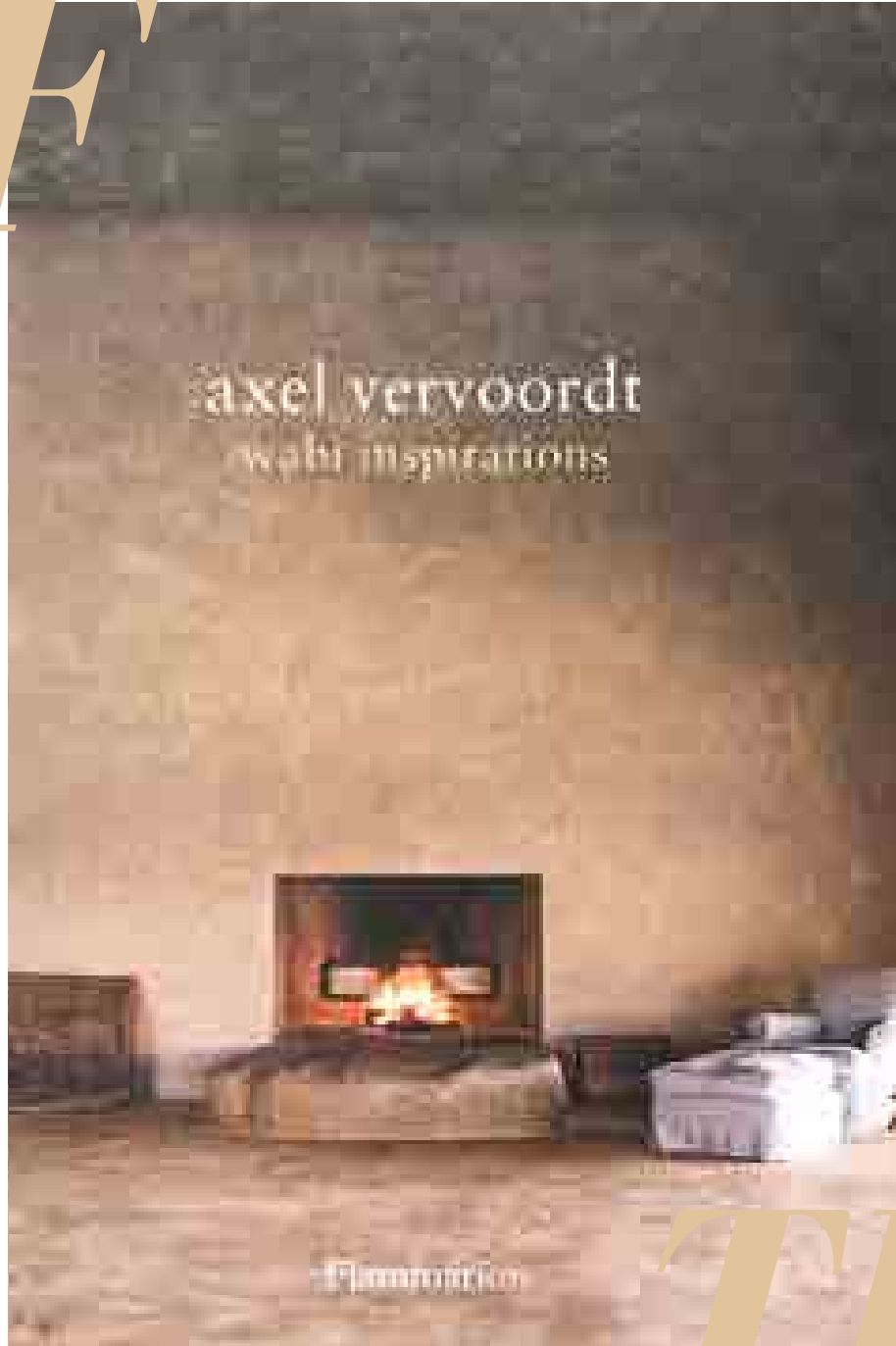
Original Irish Cream, 2 1/2 oz. of whipping cream, 1/2 tsp of vanilla extract and 2 eggs in a shallow dish.

Dip the bread into the mixture while heating 1 tbsp butter in a pan for frying.

Fry dipped bread until golden brown on each side. Top with whipped cream mixture.

BOOK OF

Wabi is a Japanese concept that derives from simplicity and authenticity. It values the beauty in imperfection. Elegance in natural materials, nobility without sophistication. Timelessness within tradition: these are the principles that define Axel Vervoordt's personal take on the concept.



In this book he reveals his interiors that are inspired by Wabi, showing readers how to create calm peaceful spaces in which beauty is distilled to its purest form.

Photographs by Laziz Hamani plunge us into the unique atmosphere of these Wabi inspirations.

Wabi Inspirations
by Axel Vervoordt
\$65.00

Italicized description provided by Amazon: <https://www.amazon.com/Axel-Vervoordt-Wabi-Inspirations/dp/2080301454>

THE MONTH

VENDOR SPOTLIGHT

CARVERS GUILD



Photos by
Carvers Guild

Article by
Carvers Guild

For over 40 years, Carvers' Guild has been a labor of love. Owners Carl and Carol Canner have created an internationally renowned company that fosters old-world craftsmanship and champions exceptional design. In a time of burgeoning imports, Carvers' Guild mirrors have been proudly Made in the USA since 1970.

Carvers' Guild began in 1964 in Boston when Carl installed mirrors into his first shipment of hand-carved picture frames from South Korea and sold them to the furniture trade. They took off. Carol made her first foray into designing and manufacturing soon expanded from South Korea, to Taiwan, Belgium, and Italy.



When lightning struck their Boston workshop in 1970, Carvers' Guild and the Canners found a permanent home in a complex of cherry red 19th century mill buildings, nestled on a wooded peninsula in West Groton MA. They stopped importing and have since manufactured everything on site. Directly controlling the means of production has been essential for Carvers' Guild's consistently exceptional quality.

Today, Carvers' Guild produces over four hundred exceptional mirrors, including the Carol Canner Collections and licensed reproductions for the Newport Society in Rhode Island and Colonial Williamsburg in Virginia. Made to order in the USA and in the true "family spirit," each Carvers' Guild mirror is an heirloom to be treasured by generations to come.

AZALEA FESTIVAL

APRIL 3RD-7TH, 2019



PAINTING BY HELEN DIXON

The Azalea festival is right around the corner. Stop into the store to create an amazing garden party!

The North Carolina Azalea Festival is Wilmington's annual community celebration and the largest festival of its kind in the state. Founded in 1948, the Azalea Festival has emerged as Wilmington's premier event. Each April, a full week of natural beauty, big-name entertainment, festive galas,

fun family events and Southern hospitality come together to showcase the charms of the Wilmington area. For community pride and springtime pageantry, the North Carolina Azalea Festival has no equal!

There is something to do for everyone, whether you are a local and have created a timely-tradition or you want to experience what true Wilmingtonian's do in April you will have a blast!

SNEAK PEEK

FOR THE LOVE OF ART



"When creative minds converge, a rhythmic dance takes to the floor like a Valse"
- David Lyman, Paysage Design Consultant

The 2019 For the Love of Art event was a marvelous creative success. We loved seeing our clients and supporting local businesses with one-of-a-kind art.

A special thanks to our lovely artists, Helen Dixon, Katia Campbell, and Diane Rogers. You made For the Love of Art a phenomenal event.





PARIS COMBO

GIGI'S MUSIC CHOICE

Paris Combo is a musical group based in Paris, France, fronted by the vocals of chanteuse Belle du Berry. The group has an eclectic style, blending elements from the traditional French chanson and pop, American jazz and swing, Roma music, and North African music. They have performed live all over the world.

Gigi recommends this iconic group because they create a fun twist on traditional classic music and interpret the French culture in their music. She loves having it on in the stores or while she cooks a meal in the kitchen.

The mainstream success of their second album, *Living Room*, released in 2000, gave the group a unique status as a French indie band capable of drawing crowds not only in France, where the album went gold, but also in Australia and the USA where they have chalked up over twenty tours.

Paris Combo's latest album, *Tako Tsubo*, was released worldwide in 2017, and again accompanied extensive touring in the US, Australia, New Zealand, and Europe.

Photo by
PARIS COMBO



PRE-MARKET SALE

GIGI'S HEADING TO MARKET

Spring market is right around the corner! Gigi is heading to market once again, which means we need to make room in our stores for new furnishings and accessories!

Select floor items will be on sale in both our Wilmington and Raleigh locations throughout the month of March.

We are thrilled to give you exclusive, limited-time sales on some of our favorite floor items. However, be sure to stop into the store after Gigi returns from market to get a first look at the new items she'll have in store!

Be sure to follow us on Instagram at @paysagehome and @paysageatnorthhills to get more exclusive updates on special offers.