

DECEMBER 2025 EDITION



PAYSAGE LIVING

YOUR MONTHLY HOME MAGAZINE

WILMINGTON | LUMINA STATION | 910-256-6050
CHAPEL HILL | MEADOWMONT VILLAGE | 919-537-5410

PAYSAGE.COM

TABLE OF CONTENTS

3	<u>December Calendar</u>
5	<u>Events</u>
6	<u>Décor Tips</u>
7	<u>Luxe for your Home</u>
8-9	<u>Products of the Month</u>
10-11	<u>Holiday Gift Guide</u>
12	<u>Paysage Loyalty Program</u>
13	<u>Paysage Gift Card</u>
14-15	<u>Artist of the Month</u>
16	<u>Book of the Month</u>
17	<u>Table Etiquette</u>
18-21	<u>French-American Culture</u>
22-25	<u>Your French Kitchen</u>
26	<u>December Radio</u>
27	<u>Spot the 7 Differences</u>
28	<u>Interior Design Before & After</u>
29	<u>2026 Design Trends</u>
30	<u>Scent of the Month</u>
31	<u>Meet the Team</u>





DEAR FRIENDS & VALUED CUSTOMERS,

As the year comes to a close, I want to take a moment to send a deeply personal thank you from myself and the entire team at Paysage Home.

To our customers, you are so much more than clients, you are the reason we get to do what we love. Thank you, or as we say with heartfelt sincerity, merci, for opening your homes to us and trusting Paysage Home to bring beauty, function, and comfort to your most personal spaces. It is a genuine honor to play a part in creating the backdrops for your family's memories.

Your continued support and belief in our vision is the greatest gift. We are incredibly grateful for a wonderful year of transformations and look forward to creating even more beautiful spaces with you in the future.

Wishing you a joyful holiday season and a beautiful new year!

Gigi Sireyjal-Horsley

Owner & Lead Interior Designer
Paysage Home

DECEMBER GRATITUDE

FILL EACH DAY WITH *Thanks*

SUN

MON

TUE

WED

THU

FRI

SAT

	1	2	3	4	5	6
7	8	9	10	11	12	13
14	15	16	17	18	19	20
21	22	23	24	25	26	27
						
28	29	30	31			



DIVE INTO MAHJONG

EACH MONDAY IN WILMINGTON

Lessons: 2pm-4pm

Open Table: 5pm-7pm



EACH TUESDAY IN CHAPEL HILL

Lessons: 2pm-4pm

Open Table: 6pm-8pm

Please reserve at least **24 hours** in advance.



Wilmington **(910) 256-6050**

Chapel Hill **(919) 537-5410**

SEE YOU THERE!

L'ART DE VIVRE
ELEGANT
HOLIDAY DÉCOR
IN TIMELESS NEUTRALS



**MUTED
 GREENS &
 BROWNS**

Drape olive foliage and bronze-gold garlands along stairways to soften the festive palette.

**COZY
 ACCENTS**

Place whimsical gnomes and soft decor in mossy greens and earthy browns in entryways, using knit textures for refined, cohesive warmth.

**TEXTURED
 WHITES &
 CREAMS**

Use white and cream accents with soft textures and sage green detailing on mantels and tables for light, sophisticated contrast.



LUXE FOR YOUR HOME



Money Table
\$340



China Plates
Dinner Plate \$35
Dessert Plate \$30
Bowl \$30

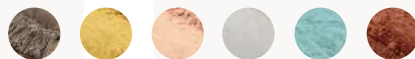


**Celebration
Decanter**
\$50

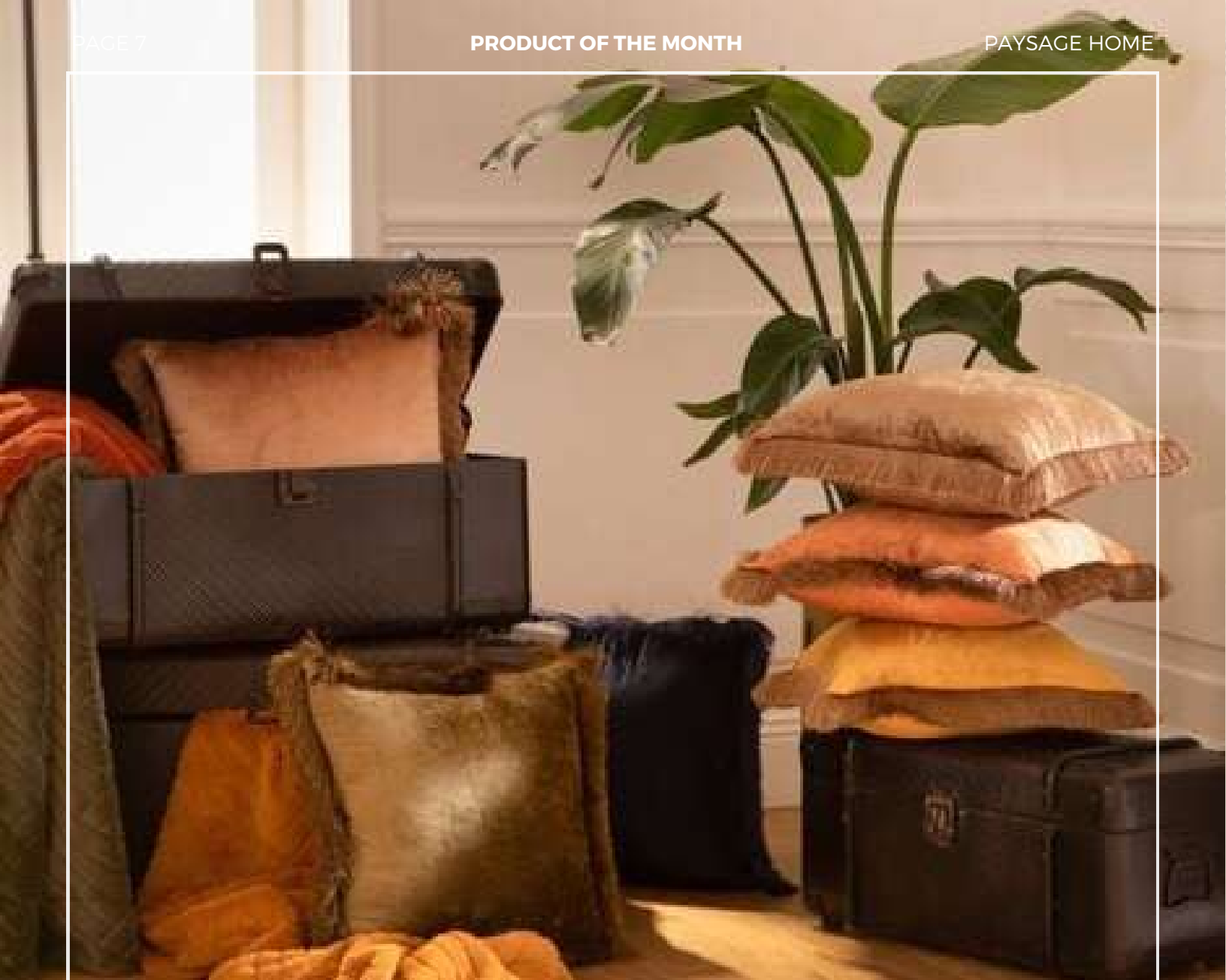


Futon
71" x 31.5"
\$495

Available Colors



Printed Kitchen Towel
\$35



NEW IN

PRODUCTS OF THE MONTH - PILLOWS



Pom Pom Cushion
12"x16"
\$105

Available Colors



18" Amadeus Pillow
\$65



35" x 24"
Bestiaire Cushion
Starting at \$115



18" Fur Ribbed Pillow in Truffle
\$50



NEW IN

CHRISTMAS



HOLIDAY GIFT GUIDE



Folding Honeycomb Balls in Burgandy and Brown
Small \$40 | Large \$50



CUSTOMIZE YOUR BAUBLE



Make Your Own Christmas Ornament
\$22

Holiday Napkins
Dinner Napkins \$19
Cocktail Napkins \$13



Louis Sherry Chocolates
\$48



Mr & Mrs Moose
24" \$155 | 34" \$230



Berry + Poinsettia Glassware
Starting at \$37



DO YOU KNOW ABOUT OUR LOYALTY PROGRAM?

HOW IT WORKS...

- 1** Scan the QR code on your Paysage receipt and enter your information.
- 2** Earn 5% back on all future purchases.
- 3** After purchasing only \$300 in products, you may redeem all future rewards.



Wilmington (910) 256-6050
Chapel Hill (919) 537-5410



Paysage.com

PICK UP YOUR PAYSAGE GIFT CARD



EVERYONE ENJOYS RECEIVING A PAYSAGE GIFT CARD

Whether you're looking to decorate your home, or searching for candles or jewelry, everyone can find something at Paysage!

Available for Purchase In Store

ARTIST OF THE MONTH



ADRIENNE WIGGINS

We are thrilled to feature Chapel Hill artist Adrienne Wiggins, whose work is a dynamic fusion of painting and sculpture.

Inspired by the natural world, Adrienne uses a unique technique involving heavy acrylic paint to build stunning, three-dimensional floral creations. Her unique style recently earned her acceptance into the **Chatham Artist Guild**. Jurors were uniformly impressed, defining her work as "relief sculptures" and praising her "very unusual approach to painting bordering on sculpture," noting her command of materials is "unlike anything any of the jurors have seen before."

Discover the depth and vitality of her award-worthy creations. See her impressive work on display now at Paysage Home!



Above: Our talented 3D artist, Adrienne Wiggins, with Franck & Gigi during the Aspen Holiday Event



BOOK
OF THE MONTH

ERIC AND ELOISE

by Jessica Hiemstra



Discover the whimsical world of Eric & Eloise, a captivating storybook written and illustrated by Jessica Hiemstra. Drawing inspiration from Scandinavian folklore and the lush forests of Canada, Hiemstra spins a heartwarming tale of an unlikely friendship between a hare and a fox.

Bound in a beautiful handmade edition, this story is more than just a book...it is a celebration of harmony found in unexpected places. The enchantment extends beyond the page, inspiring a beloved collection of home decor featuring Eric, Eloise, and their entire "Framily" of forest misfits. It is a perfect treasure for the young and the young at heart.

AVAILABLE AT PAYSAGE
\$95

DECEMBER 2025 EDITION



12 LITTLE-KNOWN TABLE MANNERS FOR ANY HOLIDAY TABLE

- **Passing Dishes:** Pass serving dishes to the right. Never pass them across the table.
- **Serving Gravy:** Use the ladle in the gravy boat. The spout is for resting the ladle, not pouring.
- **Salt and Pepper:** Always pass the salt and pepper together, even if only one is requested.
- **Identify Your Glass:** Prevent mix-ups by using a charm or tag on your glass, especially wine glasses.
- **Dress Appropriately:** Remove jerseys, face paint, or costumes before sitting down to eat.
- **Conversation:** Avoid controversial or heated topics to keep the mood positive.
- **When to Start:** Wait for the host to start eating or give permission before you begin.
- **Dirty Dishes:** Do not stack plates at the table. Let the host or helpers clear them.
- **Devices:** Keep phones and other devices off the table during the meal.
- **Hygiene:** If you need to blow your nose, excuse yourself and leave the table. Never use your napkin.
- **Patience:** Be patient with slow servers; offer help if appropriate, but never rush them.
- **Gratitude:** Always use "please" and "thank you" to show appreciation.



THE HOST GIFT DILEMMA WHAT TO BRING WHEN THEY SAY "JUST BRING YOURSELF"

The true mark of a sophisticated guest is navigating the host's kind dismissal: "just bring yourself."

For a home embracing the art de vivre and American design sensibility, your gift should reflect this effortless French-American acculturation. It must be thoughtful, design-conscious, and never intrusive.

Here are three Paysage-approved options that elegantly bridge European tradition with modern American hospitality:



The Perfect Morning Ritual

A truly gracious gift anticipates the host's post-party recovery. Present a beautiful, classic French-style striped tea towel (torchon), a practical nod to French kitchen elegance, alongside a bag of high-quality, locally roasted American coffee beans. It is a dual gesture of aesthetic beauty and practical comfort, ensuring their morning is as beautiful as their evening was.

The Elevated Cocktail Hour

Elevate their bar cart with a sophisticated blend of French tradition and mixology trend. Pair a sleek, linen cocktail napkin set with artisanal American bitters or a French apéritif like Lillet. Alternatively, gift an aged red wine for future enjoyment, acknowledging the host's style without demanding immediate service.



A Bespoke Sweet Treat

If bringing food, ensure it's ready to serve and requires no effort from the host. A box of exquisite macarons or delicate financiers from a renowned local patisserie makes a thoughtful and elegant gift, offering a moment of pure, guilt-free indulgence.



THE GIFT DILEMMA

HOW TO BUY A GIFT FOR THE PERSON WHO HAS EVERYTHING

You know that person. The one who sends their thank you card before you've even figured out what to get them. They have the gadgets, the designer everything, and probably a storage unit full of things they "might need later." Seriously, what do you get the person who owns three of everything?

Stop the madness! This year, skip the gift card panic and give them the one thing they can't buy with a quick online click: soulful, original art. Think about it: art isn't just fancy wall candy. It's a personality amplifier, a conversation starter, and proof that you put real thought into their gift (not just the two-day shipping cutoff). When everything else feels mass-produced, a unique piece of art feels personal and enduring.

Ready to score major gifting points? Head over to Paysage Home and dive into the Paysage Art Collection. We're talking gorgeous, unique pieces, many featuring incredible talent right here from North Carolina artists. It's a gift that supports the local community, looks stunning, and, most importantly, doesn't require batteries or assembly instructions.

Find your masterpiece at Paysage Home.



Ana Brown
 "Gerard"
 26" x 38"
 \$3600



Marty Allran
 "Serenade"
 Ceramic
 18.5" x 10.5"
 \$1695



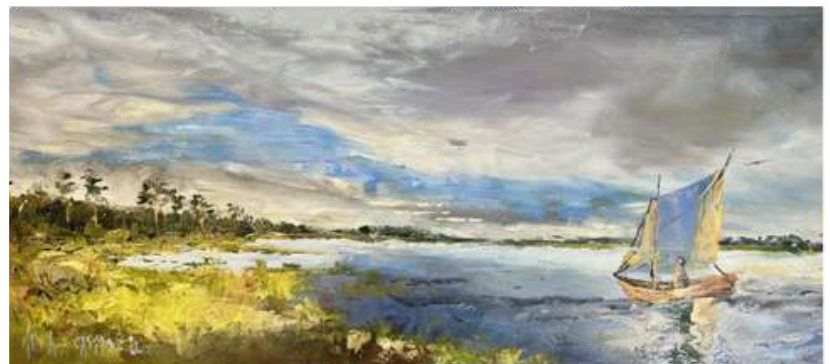
Christina Stock
 "Better Version of Myself V"
 Acrylic on Canvas
 20" x 20"
 \$1,050



Christina Stock
 "Better Version of Myself III"
 Acrylic on Canvas
 24" x 24"
 \$1,500



Marty Allran
 "Moody Blue"
 Ceramic
 18.5" x 10.5"
 \$1795



Katia Campbell
 "Fishing Boat"
 40" x 16"
 \$2000

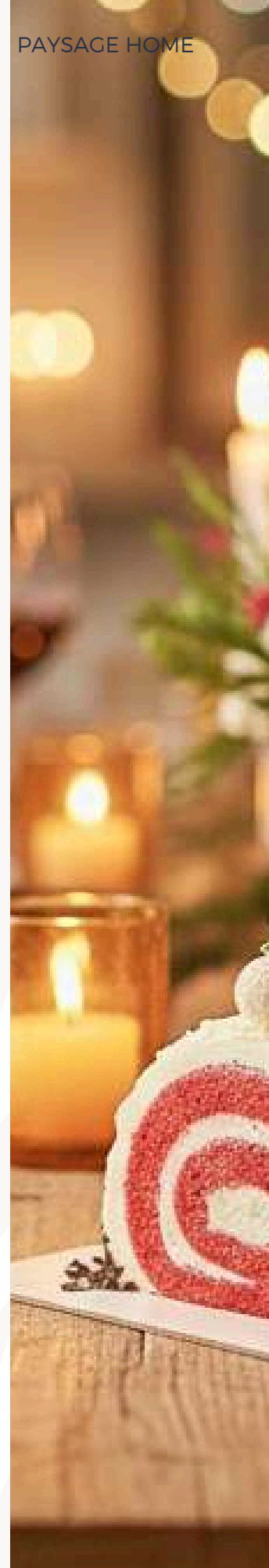
**Click the item to purchase
 & learn more.**

THE HISTORY & TRADITION OF LA BUCHE DE NÖEL

December has arrived, and with it, promises of snowy holidays and warming frozen hands around a soothing mug of hot chocolate. As Parisians and small town dwellers alike purchase their freshly-cut Christmas trees, the anticipatory delight in getting together en famille is starting to show. French family meals are known for three things: lasting hours on end, beautiful and meticulously set tables, and traditional holiday desserts. Christmas dessert in France can only mean one thing:
La Buche de Noël.

The tradition of the Buche de Noël dates back to medieval times, one of many pagan rites competing with Christmas traditions. Depending on the region and its various beliefs, salt, wine, or holy water were sprinkled atop the log before lighting it on fire. Once lit on Christmas Eve, the log is supposed to burn for at least three days for good luck.

Little by little, traditional hearths disappeared in homes, replaced by wood-burning stoves. With no center stage left for the Christmas log ritual, smaller logs were placed as a decorative reminder on tabletops, and it was only a matter of time before some intrepid and imaginative soul realized that it would be a lot nicer to eat the log rather than simply watching it. From this tradition, La Buche de Noël as a dessert was born.




Taste the best of
LA BÛCHE DE NÖEL



There are thousands of variations on La Bûche de Noël throughout France, but this step-by-step recipe is the simplest version for beginners: Start by making a jelly roll cake and buttercream. Roll it all up and frost with silky ganache. Run a knife through the frosting to create a textured yule log effect. You can then add diminutive decoration such as little mushrooms made of meringue or butter cream and some chocolate Christmas trees.

You can now order your Bûche de Noël from Far From France. They offer two different flavors, Red Velvet and Chocolate Raspberry. There is a limited number of each kind so reserve yours now!

 **910-833-5002**

 **1474 Barclay Pointe Blvd #201
Wilmington, NC**



Alban Pelletier, Owner
Far From France

YOUR FRENCH KITCHEN RED VELVET YULE LOG

GENOISE SPONGE CAKE

Serves 5 people

- 1/3 cup unsalted butter
- 3 large eggs
- 2/3 cup sugar
- 2/3 cup all-purpose flour
- 1/8 cup corn flour

HERE'S HOW

1. Preheat the oven to 350 degrees.
2. Melt the butter and let it cool.
3. Break the egg and add the sugar in the mixture.
4. Then warm up the beaten eggs to 60 degrees above a water bath (Bain Marie) so the sugar will melt into the eggs.
5. Add some red coloring to the mixture and beat the eggs with the sugar for about 11 minutes on medium speed and 5 minutes on high speed to achieve a Ruban consistency.
6. Mix the flour and the corn flour together in another bowl.
7. Then add the flour to the egg mixture and mix it all gently with a spatula.





CREAM CHEESE FILLING

- 3/4 cup, cream cheese at room temperature
- 7/8 cup, powdered sugar
- 1 teaspoon, pure vanilla extract
- 1/4 cup, mascarpone cheese

1. Beat the cream cheese on medium speed and slowly add the powdered sugar.
2. Add the vanilla and the mascarpone and beat at high speed for 2 minutes.
3. If the mixture is too thick, you can add a splash of milk.

8. Pour the mixture on a sheet pan to achieve 1/2 inch thickness.
9. Cook the genoise for about 20 to 25 minutes.
10. When cooled down to room temperature, cut the genoise to a large rectangle 12" x 10".
11. Apply a generous amount of the filling and roll the genoise. Add more filling on top of the cake, make your own decoration and let it cool down in the refrigerator overnight.
12. Voila!





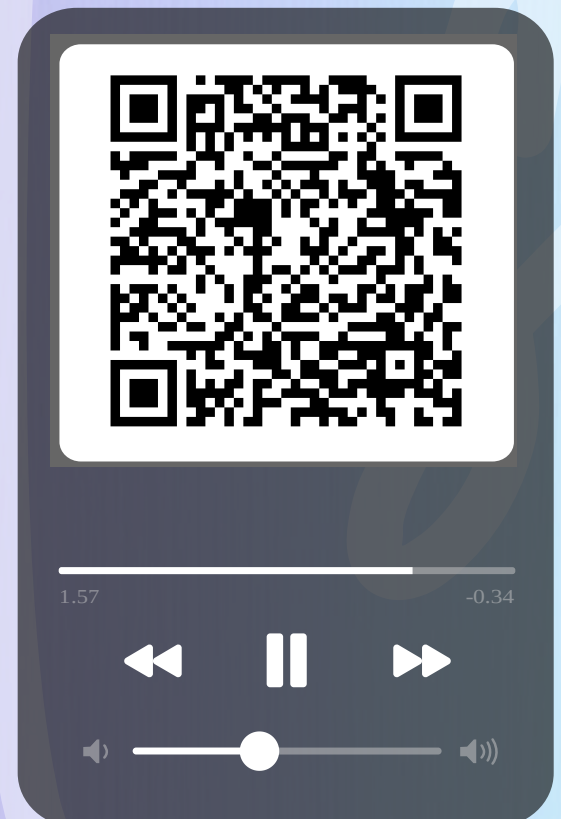
DECEMBER
RADIO

FAIRE LA FÊTE À PARIS

Christmas in France is a cherished season, filled with warmth, tradition, and togetherness. From the sparkling lights of Paris to cozy village festivities, the French celebrate with a rich blend of culinary delights, family gatherings, and classic music. French Christmas songs, or “chansons de Noël,” are an essential part of the holiday atmosphere, filling homes and markets with melodies that evoke nostalgia and joy.

Direct from Paysage Home, this month’s selection of French music brings the heart of Christmas in France to your living room. Let the timeless carols transport you to bustling Christmas markets and candlelit midnight masses. Whether you’re decorating the tree or sharing a meal, these songs will create a magical backdrop that celebrates the spirit and tradition of a truly French Noël.

[CLICK THIS LINK
TO LISTEN](#)



SPOT THE SEVEN DIFFERENCES



UNLOCK THE DOOR TO YOUR
DREAM HOME
 WITH PAYSAGE



AFTER

After discovering the clients value and vision for their home, Gigi and her team created a perfect interior. They expertly weaved timeless pieces, elegance, antiques, unexpected boldness, and artisan craftsmanship that reflected their client's uniqueness.

Gigi Sireyjol-Horsley brings her French sensibility to every Paysage project from new construction to transforming your current space. Paysage does it ALL!

BEFORE



BOOK A CONSULTATION

To see your desires come to life, contact us today to schedule a consultation or get a quote on our other design services.



2026 DESIGN TRENDS

2026 marks a decisive pivot from rigid, cool austerity. The dominant theme is creating soulful sanctuaries, homes prioritizing restorative comfort and quality, emphasizing personal history, warm materials, and handcrafted artistry.

Modern Heritage & Craftsmanship



The trend blends classic architecture with sculptural, handcrafted furnishings. It prioritizes craftsmanship and natural materials, creating deeply personal spaces with layered texture. This defines a quieter luxury rooted in place and memory.

Curved Forms & Kitchen Color

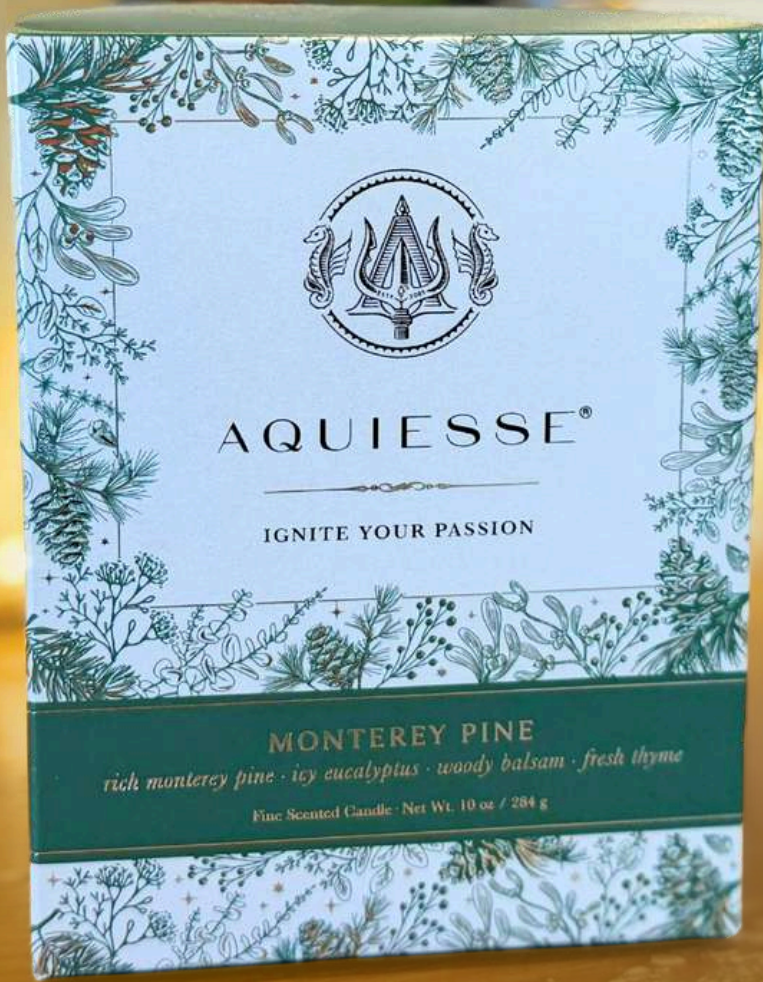


Kitchens prioritize bold color or warm wood. Curved forms like arches soften rigid lines, promoting natural, emotional flow over traditional austerity.

Custom Finishes & Wallpaper Artistry



Design is led by art. Walls feature scenic wallpaper murals, and floors showcase hand-painted designs, defining personal comfort as the ultimate luxury.



SCENT OF THE MONTH

Monterey Pine Signature Luxury Candle

This exquisite, meticulously crafted scent captures the serene essence of a winter forest. The invigorating blend features crisp eucalyptus, earthy fresh thyme, and warm woody balsam, grounded by the rich, resinous aroma of majestic Monterey pine. It's the perfect sophisticated addition to your decor, bringing warmth and tranquility with every flicker.

AVAILABLE AT PAYSAGE
\$60

DECEMBER 2025 EDITION

Meet your
**PAYSAGE
ASSOCIATES**



**JUDY
WATFORD**



**FRANCK
KRYNEN**



**GIGI
HORSLEY**



**JERRY
HOBSON**



**DARRYL
CARPENTER**



**SHANNON
PETERSON**



**JACK
ERWIN**



**TOBI
BOWEN**



**MARGARET
CARPENTER**

SHOP LOCAL

BE THE FIRST TO SEE OUR NEW ITEMS AS THEY ARRIVE!

Keep up with us on social media,
we post products and great information daily.



[@paysage_wilmington](#)
Lumina Station
Wilmington, NC



[@paysage_chapelhill](#)
Meadowmont Village
Chapel Hill, NC



We'd love a great Google Review

Wilmington Store



<http://bit.ly/4oFitk2>

Chapel Hill Store



<http://bit.ly/4oFitk2>

